

## Chairman's Corner

.....

By Art Jackson KA5DWI

Let's hope for more positive gains for SWOT in 2007.



I do not know about you all, but I was one too gladly put 2006 behind me. It seemed to fly by so quickly, but I was really amazed what occurred in one year. We had some good successes and a few minor failures, but overall we remain pleased where this organization sits within

the Amateur Radio community. The one thing learned this year is to not take things so seriously and just do our best to keep promoting what the SWOT Radio Club supports, Single Sideband, CW and Digital operations on 2-Meters.

What I mean about not taking it so seriously, is much about the recent decisions concerning the expansion of phone privileges followed by the elimination of a CW requirement. I must admit that I was a little miffed; you then sit back and think about it. When was the last time you worked a Novice or Technician on 3.740 MHz CW, or better yet on 28.165 MHz? I recently participated in the ARRL 10-Meter Contest and did not hear a single Novice/Tech operator in their CW portion of the

10-Meter band. Things change over time and we have to accept it. I will say that anyone who believes that CW is an antiquated is closed-minded, but in this day and age with so many avenues to be enticed and entertained; CW had become just another burden to bring in new operators. And despite our own opinions, we need more operators if we intend to keep our authorizations.

So we welcome the new generation of Hams. 2-Meter Sideband is fascinating and fun and we look forward to assisting you in Weak Signal operations.

### Our Foundation - SWOT Nets

We still value our Nets and are excited that our existing ones continue to prosper. Please make sure that you make an attempt to check in to your area SWOT Nets. If Nets are not your social calendar, try to check in when you can or even get a relay to one in order to help support the efforts of our Net Controls. Running a weekly Net takes a tremendous and dedicated effort of a limited number. Your check-in is valuable.

We are glad to report that a new SWOT Net has begun in Southern California. Well-known Gordon West, WB6NOA runs the Net concurrently with NORCAL on 144.240 MHz Sunday evening. So far the Net has taken

off well and has put the SWOT name in Southern California. It has had a good response and is doing very well.

*"The one thing learned this year is to not take things so seriously and just do our best..."*

We are always willing to help out in getting SWOT Nets on the air. Contact us, John Petersen KM5ES or myself if you and others would like to start a SWOT Net. All we ask is to realize the commitment in time and station it takes to run one. We also will help

support and inform others of other reoccurring 2-Meter SSB related



activities. We are here to promote, SWOT and non-SWOT.

### A Little Bad News

We are sad to report that the Western States Weak Signal Society (WSWSS) no longer exists as of February 1, 2007. For reasons not clear, it had just lost a tremendous involvement of its membership. The club had a healthy treasury. Its only remaining officer, Paul Hammer KA6CHJ was seeing that the funds were being fairly distributed back to contributing and dues paying members. Any excess funds were being donated to the ARRL Defense Fund and the Salvation Army.

I want all of you members to remember that these clubs do not run themselves. They take the involvement and support of their members. It is more than just paying the dues. Pass the word around about us, "Elmer" a newcomer, and post an event or a question on our Homepage's mail-list or on the Yahoo Group. Very few people do all the work for SWOT. Time can take a toll and unless you become more involved, the same fate could bestow us one day.

### Upcoming Events

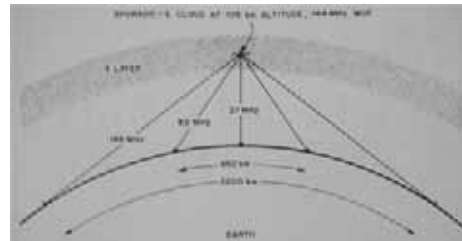
Once again, my schedule is full as I enter what I hope is my final year of college. Operating on the radios continues to be slim. I also have evening classes and miss the Nets here. I am ashamed of myself, but things will get back to normal in due time.

We still have a lot to look forward to. We will return to HamCom in June. It has been promised that all parking will be on site at the Plano Centre. Parking was a serious issue last year. Had it been a similar situation this year, I would have planned not to attend. I did not wish to waste time and effort hauling stuff back and forth, plus worrying that my vehicle was going to be towed. I hope they get it right the year.

We also plan to make an appearance at the Central States VHF Society Conference in San Antonio, Texas the last weekend of July. "Central States" (mostly from everywhere) is a unique event. Anyone having a remote interest in Weak Signal needs to attend at least one of these in their lifetime. It is a "Who's Who" gathering. Many pioneers in VHF/UHF/Microwave operating appear for this. It is informative and heck of a lot of fun as well.

Despite my continuing tight personal schedule, I hope to see and meet you during the year.

73's  
Art Jackson KA5DWI



Critical freq = 27Mhz



Gordon West WB6NOA

The following report filed with John, KM5ES is from Gordon West. (Ed. note: Gordon was awarded "Ham of the Year" at the Dayton Hamvention in 2006)

The Southern California SWOT net averaged 35 checkins in January every Sunday night with 7 grids a normal report. We begin the net a 7:50 on 144.250, listen mode for Larry, W6OMF in the Bay Area looking South. At 8:00 PM sharp Sunday nights, we open OUR net on 144.240, and begin with news. We then look South for San Diego checkins, then East for Arizona checkins, and then the LA basin and points North for SSB checkins. We always ask for MORE than just call signs - this lets each ham tell us about what is new around their shack!

We finish at about 8:30 PM, and then go into a general discussion about SWOT membership advantages.

A few evenings ago, we had Paul, KH6HME portable local, talk about his Hawaii beacons and now that he is back on the Big Island, we hope soon for our annual band opening covering 2500 miles Pacific tropo !

Gordon WB6NOA





# Annual NORCAL SWOT Gathering

By Larry Hogue W6OMF

Our annual gathering of the NORCAL SWOT chapter occurred at Bakers Square on two December with 57 card carrying hams and 10 significant others. Oh, when arriving at the place we had four 160 meter mobile contesters having breakfast and were able to meet another great bunch of hams.



Donations for the door prizes came from a batch of staunch supports and included, W6BO, Bob, (IC-255a Two meter mobile & heath pwr meter) WA6JQV, Bob, (3 each 10 foot ½ inch jumpers); KC6ZWT, Norm, (4 bags of mini adapters (SMA, BNC, etc)); WF6J, Carl, (8 amp PWR supply); WA6ZKY, Gordy, (new 220 mobile antenna); KM6QJ, Travis, (Climbing belt) and last but not least WA6KTK, Steve brought a case of his families wine.

Golly, as you can see many of the group went home with something... Wine; KC6ZWT, KF6RTC, KY6A, K6WWH, KA6CHJ, WA6VPJ, KE6OGL, KI6N, KD6EGX, KF6VNQ, WA6CAX, AND KO6CO. Jumpers of the mini kind went away with Bob, K6HEW, Alan, KF6PGT, and Dean, NR6A and the ½ inch kind went with, Bob, K6HEW, Paul, KA6CHJ, and John, KF6LFO. The power supply went to Harry, W6HFM, the 220 antenna went to Mike, K6NC, and the climbing belt to Jerry,

N6VG. The radio went to our good friend Steve, WA6KTK, and the power meter to Gordy, WA6ZKY.

The last thing on the agenda was awarding the excess monies in the membership account and any profits or donations \$\$\$ (thanks WA6KTK, Steve, KF6PFT, Bob, K7NOM, Bill, and KC6RHP, Mike for your donations.) This year with 44 paid NORCAL members and the cash received we were able to acquire a 2M9SSB and 2M-HO Loop for this drawing... AND THE WINNERS ARE John, KC6SEH of West Sacramento (2M9SSB) and W6HOC, Howard of Santa Clara (2M-HO Loop)... 73's Larry W6OMF

**A first for Rovers** We have just received word that two roving WSJT stations made a "loop-to-loop" FSK441 meteor-scatter QSO while in motion on 6 meters February 8, 2007. **Bruce, N5SIX** (left) featured one year ago in this SWOT bulletin and **Steve,**

**N5AC** (vehicle right) are to be congratulated on this first of a kind accomplishment. "Rocks were few and very slow" stated Bruce. The DX was approx. 350 miles from EM13qc to EM43ql. Steve answered a CW from Bruce at 1335 utc.



## NORCAL SWOT continued

By Larry Hogue W6OMF



Purple top is the wife of W6HMB, Tom  
Teal green is  
Linda, KG6OQL, SWOT  
#3480  
Next to here is Ed,  
KG6OQK, SWOT #3479  
Handsome guy in the  
Plaid shirt is Bob,  
K6HEW, SWOT #3286  
On his right is  
Gary, KE6QR, SWOT  
#3308  
And on Gary's right  
is his bride,  
Jennifer, KI6ARW,  
SWOT #3474  
Right side of  
picture is Bill,  
KD6LTB, #3413



With his back to us  
is Richard, K6ALE,  
SWOT #3323 (look in  
the mirror)  
Going counter  
clockwise we have  
Gordy, WA6ZKY, SWOT  
#3397, then Ken,  
W6IZU, SWOT #3290,  
David, KD6VNQ, SWOT  
#3281, John,  
KF6LFO, SWOT #3325,  
Alan, KF6PGT, SWOT  
#3303, and finally  
Steve, WA6KTK, SWOT  
#3476

In the mirror and  
over Richards  
shoulder (in the  
mirror) is Paul,  
KA6CHJ, SWOT #2724  
and on Paul's right  
is Tony, KN6NG,  
SWOT #3173



# North American High Speed Meteor Scatter 2007 Spring Rally

Click [here](#) for the WSJTGROUP homepage.

**Sponsor:** WSJT Group [groups.yahoo.com/group/wsjtgroup/](http://groups.yahoo.com/group/wsjtgroup/)

**Please read the rules carefully as major changes have been made for the 2007 Spring Rally. This is a Random Contacts Only event. The 2007 Winter Rally during the Geminids Shower will be assisted and unassisted.**

## Rally period

1300 UTC May 5 to 1500 UTC May 7, 2007.  
This a weekend rally, chosen to coincide with the eta-Aquarids meteor shower. More information on this shower can be found [here](#). The usual Saturday random hour periods are cancelled during rally weekend.

## QSO Procedure

This is a digital-mode-only event for meteor scatter QSOs using FSK441 or JT6M. It is recommended that WSJT 6 be configured with 'grids' for report. Instructions on how to do this can be found [here](#). Users of older versions of WSJT should enter their grid in the 'Report' box. Exchange is both callsigns, 4 character maidenhead grid squares, and final 'Rogers'. All operators are reminded that exchanging information without the use of meteor scatter during a QSO attempt invalidates the contact. No scheduling is permitted during the rally. In particular, operators cannot use the Pingjockey website to observe activity or self-spot.

**Bands:** 50, 144, 222, and 432 MHz.

## Calling Frequencies

Primary 144.140 and 50.260 MHz

Secondary 144.125 and 50.275 MHz

No calling frequencies for 222 and 432 MHz

For information on the call frequencies click [here](#).

## Calling CQ

All contacts are to be random/unscheduled except as noted below. All stations calling CQ must use the Primary or Secondary calling frequencies following the [offset method](#). Contacts completed on either of the calling frequencies are **not valid**.

## Schedules

1. Stations separated by 1200 miles or more can schedule prior to the start of the rally. Operators are encouraged to push the distance envelope and attempt extreme-DX contacts.
2. If a station is decoded during the rally that is known to be 1200+ miles distant, scheduling of an attempt during the rally is permitted, e.g. by email.
3. Schedules are permitted before and during the rally for 222 and 432 MHz bands at any distance.

## Scoring

50 MHz: 1 point per QSO

144 MHz: 2 points per QSO

222 MHz: 4 points per QSO

432 MHz: 8 point per QSO

Score is QSO points times number of unique grid squares worked per band

Rovers: QSO points x (Unique grid squares worked per band + Number of grids from which at least 1 QSO was completed). This is the standard rover scoring formula for VHF contests.

## Categories

Categories are single band, multi-band, and rover. Each of these categories competes against stations in their time zone. (Rovers may turn in two logs if additional contacts are completed from their home QTH)

**North American HSMS 2007  
Spring Rally continued**

The 12 competition categories are summarized as follows:

Multi-Band, EDT; Multi-Band, CDT; Multi-Band, MDT; Multi-Band, PDT

Single-Band, EDT; Single-Band CDT; Single-Band, MDT; Single-Band, PDT

Rover, EDT; Rover, CDT; Rover, MDT; Rover, PDT

**Awards:** Certificates will be awarded to stations with high score in each of the competition categories.

**Log submission:** Participants should submit: 1) A summary and 2) A rally log.

1) The summary should include: i) Your call, ii) Your time zone, iii) Single or Multi-band, iv) QSOs per band, and v) Final claimed score. Please show the arithmetic you use to obtain your final score, ie. QSO points x Multipliers = Final Score.

2) For each QSO, the log must show: i) Date, ii) Time (UTC), iii) Callsign of station worked, iv) Grid, v) Band (50, 144, etc), and vi) QSO points.

Submission of the log as an Excel spreadsheet (arrange the columns as shown above) by email is **strongly encouraged**, although any convenient log submission format is acceptable. Email logs to [wa5ufh@ykc.com](mailto:wa5ufh@ykc.com) To verify that your log has been received click [here](#). Please allow 4-5 days for logs to be processed.

**Operating Guidelines**

Operators are encouraged to listen for tail-enders and to QSY contacts to another band. Tailending and QSY procedures can be found [here](#). Short Hand messages are permitted but stations should consider the use of random hour messages if there is high activity. Operators should review the procedures for requesting 'missing information' as described

[here](#).

Operators are encouraged to take advantage of scheduling where permitted. Rally participants should refrain from using Internet loggers. All operators are encouraged to submit a log.

Rally coordinators: Tip (WA5UFH); John (N6ENU); Mike (WB2FKO); Joe (K1JT)

Advisory committee: W0IOH, N5SIX, WB9IIV, KE7NR, K4YMQ, K9SQL, W5UWB, W4FRA, W9SE,

**North American High Speed Meteor Scatter 2006 Winter Rally Certificate winners**

Assisted Category		
Time Zone	Station	Points
EST	WB9IIV	459
CST	K0AWU	8064
MST	W6OUU	442
PST	KC6ZWT	209
Unassisted Category		
Time Zone	Station	Points
EST	N9EGT	162
CST	N0PB	1750
MST	W0IOH	264
PST	*	*
Rover - XE/VE		
Top XE	XE2AT	108
Top VE	*	*
Top Rover	*	*
* no entry/log submitted for certificate		

## SWOT Net Reports

Here are the net reports for  
Nov 2006 - Jan 2007

### Northern California W6OMF

(Sunday)

11/05 82  
11/12 80  
11/19 None  
11/26 85

12/03 72  
12/10 75  
12/17 81  
12/24 None  
12/31 41

01/07 85  
01/13 70  
01/20 60  
01/27 69

From Larry: A great finish to a wonderful year. 24 different grids, and 150 different stations checked in with us during the year. We are alive and well with great people. 73 Larry/Sue.

### Northeast Missouri N0PB

(Monday 8pm)

Date Check-ins/Grids/  
States/SWOT

01/01 26 - 13 - 06 - 04  
01/08 32 - 17 - 08 - 08  
01/15 no net  
01/22 29 - 14 - 06 - 07  
01/29 35 - 16 - 06 - 06

### North Texas W5FKN (Wednes- day 9pm)

Date Check-ins/SWOT/Grids/  
States

11/01 23 - 13 - 10 - 03  
11/08 no net  
11/15 no net  
11/22 17 - 11 - 13 - 03  
11/29 no net

12/06 22 - 13 - 10 - 03  
12/13 21 - 12 - 10 - 03  
12/20 28 - 13 - 13 - 03  
12/27 no net

01/03 22 - 10 - 13 - 02  
01/17 no net  
01/24 20 - 12 - 11 - 02  
01/31 16 - 09 - 10 - 02

### E. Oklahoma KD5ZVE & KM5ES

(Thursday 8pm)

Date Check-ins/Grids/  
States/NCS

11/02 32 - 13 - 04 KM5ES  
11/09 35 - 12 - 05 KM5ES  
11/16 31 - 12 - 04 KD5ZVE  
11/24 no net  
11/30 29 - 11 - 04 KM5ES

12/07 30 - 13 - 04 KM5ES  
12/14 24 - 14 - 04 KD5ZVE  
12/21 36 - 15 - 05 KM5ES  
12/28 34 - 13 - 04 KM5ES

01/04 38 - 16 - 05 KM5ES  
01/11 no net - ice storm  
01/18 41 - 15 - 05 KM5ES  
01/25 43 - 16 - 06 KM5ES

### E. Texas Piney Woods KM5PO

(Saturday 7am)

Date Check-ins/Grids/SWOT/  
States

11/04 21 - 12 - 09 - 04  
11/11 18 - 11 - 09 - 03  
11/18 21 - 11 - 09 - 03  
11/25 30 - 16 - 15 - 05

12/02 28 - 15 - 15 - 05  
12/09 27 - 15 - 14 - 04  
12/16 23 - 11 - 10 - 04  
12/23 19 - 11 - 09 - 03  
12/30 14 - 08 - 07 - 03

01/06 15 - 07 - 07 - 03  
01/13 16 - 08 - 07 - 03  
01/20 18 - 08 - 08 - 03  
01/27 20 - 11 - 09 - 03

## Event and Contest Calendar:

Feb 28 WSJTGROUП Sprint  
Mar 28 WSJTGROUП Sprint  
Sprints info: <http://www.ykc.com/wa5ufh/WSJTGROUП/SprintRules.htm>

May 5-7 WSJTGROUП Spring  
rally info:  
<http://www.ykc.com/wa5ufh/Rally/NAHSMS.htm>

June 9-10 ARRL June VHF  
contest

July 26-29 CSVHFS  
conference San Antonio,  
Texas

## What to expect Feb-Mar Meteors:

Chi Capricornids Jan 13 -  
Feb 28, peak Feb 13/14  
April Piscids Apr 8-29,  
peak Apr 20/21  
Lyrids Apr 16-25, peak Apr  
22, 10 zHR with outbursts  
over 100

Full Meteors calendar:

[W8WN](#)  
[Gary Kronk](#)

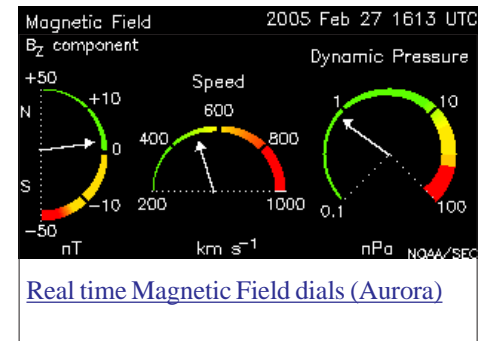
## Aurora:

Watch:

[http://umtof.umd.edu/pm/  
latest2day.gif](http://umtof.umd.edu/pm/latest2day.gif)

[www.spaceweather.com](http://www.spaceweather.com)

[http://  
www.aurorasentry.net/](http://www.aurorasentry.net/)



## Tropo:

Watch for:

1. Upper Air High Pressure systems building from Northern Mexico, the Gulf of Mexico or Southern Florida.
2. Pacific Fronts passing across the U.S. with a strong High Pressure ridge wedged between them.

Always keep an eye on:  
the [Hepburn Forecast](#).  
the [APRS Real time VHF propagation map](#).  
the [Presence of radar reflectivity \(false echos\) HERE](#)  
the [Green Page \(144 Mhz Propagation Logger\)](#)  
the [Surface Map](#) (there are many choices)



## Improving your Contest

By Jim McMasters KM5PO

If you enjoy working contests then read on. Contests for me are an end in themselves. It's the one single time that I make an effort to prepare and test the ability of my station to make contacts on 2 meters and the other VHF/UHF bands. When you contest, most operators keep track of their qsos with some form of logging. For years I just used pen and paper. Later came computerized methods and recently (2 years running) we have used N3FJP's fine networked software for logging our pile ups as the KM5PO multi-limited station in the June contest. This software has never crashed even when the 6 meter operator was pumping 150 qsos an hour and the 2 meter & up operator was right behind him. Sometimes other operators that are not at the mic will browse the logs simultaneously to review

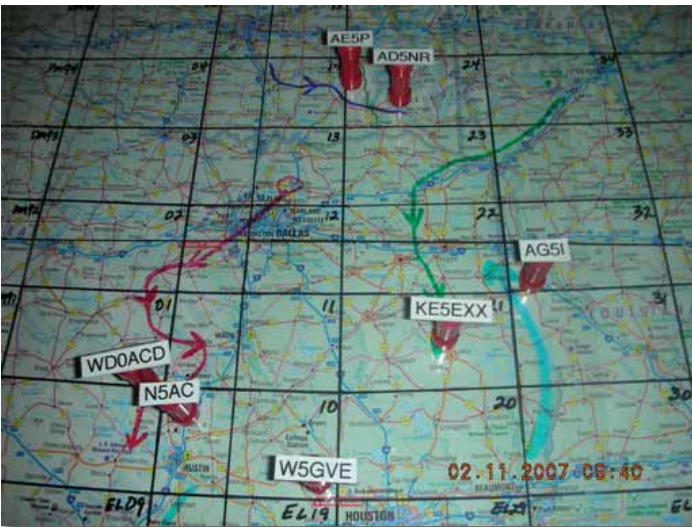


Fig 1 - magnetic board to track rovers

our progress or suggest strategy.

Through all of this, one thing always bugged me - it was hard to track rovers and know what bands and grids we had worked them on and also our antennas tend to be very narrow making them hard to point at times. In an effort to improve in this area I decided to do two things. Check out more software logging programs and build a physical map board where operators could manually see the rovers and their movement.

The board was easy (see figure 1) with a trip to the bookstore for a map, a Sharpie to permanently mark the grid boundaries, a magnetic bulletin board from Target, and some magnets from the kid's toybox plus a label maker. I used the board in action during the January VHF contest and it cer-

tainly worked. I taped a piece of acetate over the main working area so that I could mark rover paths on the acetate and then discard it after the contest making the board reusable.



The software hunt took longer but I ultimately found a near perfect offering called RoverLog. First let me tell you the software is free which is always great. Second, it performed without issue during the January contest and gave me the main thing I wanted, ability to know what grid and band I had already worked a station. But there was a bonus or two as well. It has 5 different callsign lookup functions depending on what button you push. These work primarily from what you've entered in the "Call" field (some work on partial data, others require a full callsign). I found two of the lookups to be extremely helpful. The "Buddy Lookup" goes out to all of your logged QSOs plus a "Buds" file you set up separately and it pulls the grid(s) and bands you have logged or prepared for the station in question (see Figure 2). For the sake of fixed stations, your "Logged QSOs" file would be wise to have several years of contest data. For the other "Buds file" you can prepare just the rovers expected to operate in your current contest, their expected grids and their bands. On the other hand, a roving station would use the "Buds file" to hold all the base/fixed stations in the rover's coverage area and their bands. As a rover moves from grid to grid, they can retrieve (by callsign) each of their "Buds" to see that they need a QSO in that grid on the various bands indicated.

Another lookup, called Web Lookup automatically performs an internet query with the full callsign you've entered in the "Call" field. You can control the URL accessed and while the default is qrz.com, mine points to my own server with a custom program to parse qrz.com's detailed page and return the 6 character grid locator to the program. The grid data is then pasted automatically into the "Calc" panel which is an interface to the antenna rotor (see figure 3). With some additional cabling I can then control multiple rotors to move the antennas if the operator decides it needs doing.

One function that I was not extremely pleased with was the fact that each client

computer holds it's own database (rather than sharing one database over the network) which makes real time updates not possible. There is a refresh function that can be performed manually however and in actual practice, operators at the microphones are usually too busy to be browsing the logged contacts made from other positions so it may not impede us at all.

There are many more functions available from the software but if you've come this far, why not give it a try. Simply download the program from this link: <http://www.2ub.org/roverlog/>

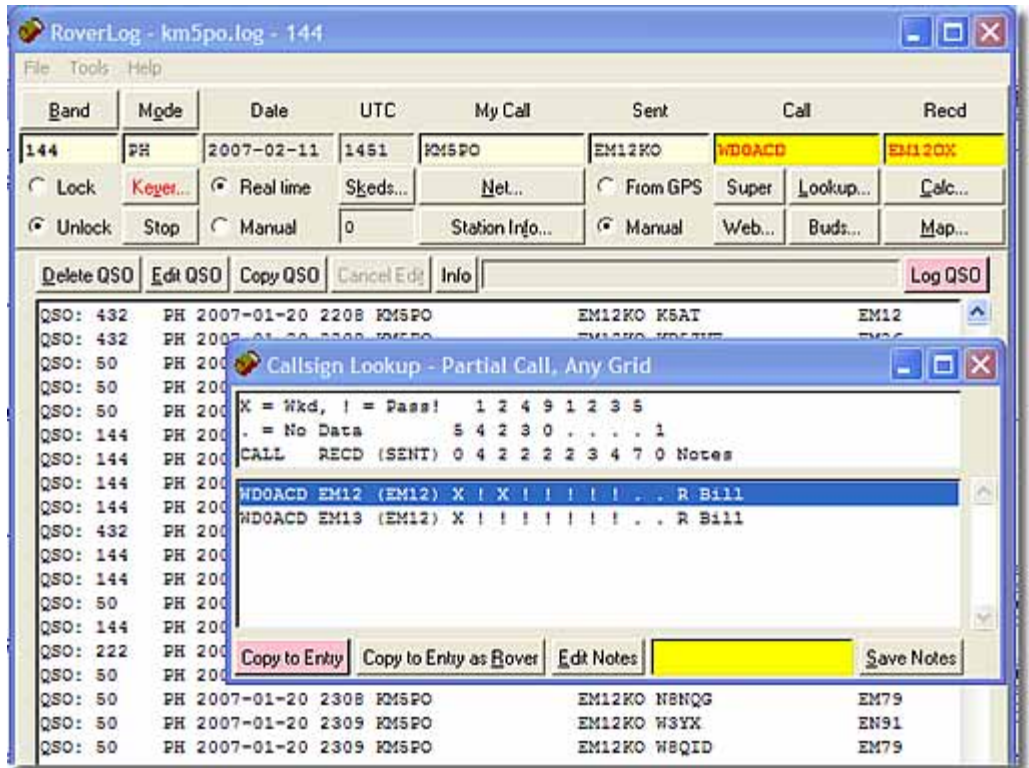


Fig 2 - The "Buds file" lookup here shows W0ACD/R has been worked on 50 Mhz in two grids and on 222 Mhz in EM12. The exclamation mark designates all the bands he has available.

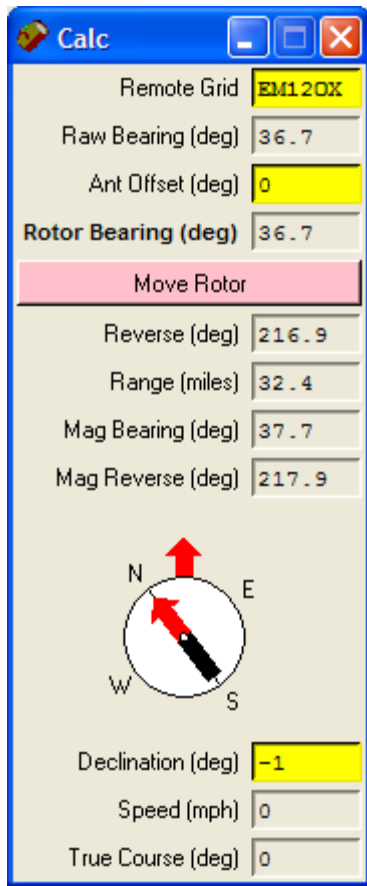


Fig 3 - The "Calc" panel or Rotor control indicates a bearing of 36.7 degrees to W0ACD/R.

**New & renewed members from Howard Hallman, SWOT Secretary-Treasurer:**

SWOT#	Call	Name	City	State	Grid
847	AC6DC	Wilbert Dees	San Jose	CA	CM97
3290	W6IZU	Ken Decker	El Dorado	CA	CM98
3330	KM6QJ	Travis Selk	Concord	CA	CM98
3356	KG6HVY	Zack Selk	Concord	CA	CM87
3510	N7UWJ	Juan Cabrera	Niceville	FL	EM60
3524	KG6WLV	John Wisyanski	Concord	CA	CM87
3525	W6GJI	Edward Accomazzo	Denton	TX	EM13
3458	KD5ZVE	Jimmy Johnson	Claremore	OK	EM26
3437	W5WRF	Wayne Fitch	Flower Mound	TX	EM13
3420	W6MAV	Mike Vieira	Vacaville	CA	CM88
3411	K6UE	Francis Clasby Jr.	Alameda	CA	CM87

## *SWOT and Selected 2-Meter Nets*

Day	Local Time	Area	Net	Frequency	Net Control Station
<b>SUN</b>	<b>8:00 pm</b>	<b>Vacaville, CA</b>	<b>North California</b>	<b>144.250</b>	<b>W6OMF Larry</b>
<b>SUN</b>	<b>8:00 pm</b>	<b>Costa Mesa, CA</b>	<b>South California</b>	<b>144.240</b>	<b>WB6NOA Gordon</b>
SUN	8:30 am	Tucson, AZ	Arizona	144.250	N7SQN AI
SUN	8:30 pm	Zebulon, NC		144.220	N1GMV
SUN	9:30 pm	Holland, MI	Michigan SWAM	144.155	K8NFT
MON	7:30 pm	Albuquerque, NM	New Mexico	144.200	N5XZM Bobby
MON	8:00 pm	Colorado	Rocky Mt. VHF +	144.220	N0VSB W6OAL
<b>MON</b>	<b>8:00 pm</b>	<b>Midwestern United States</b>	<b>Northeast Missouri SWOT</b>	<b>144.250</b>	<b>N0PB Phil</b>
MON	8:00 pm	Sandusky	East Michigan VHF	144.250	W8IDT Bart
MON	9:00 pm	Tidewater, VA		144.230	
<b>TUE</b>	<b>8:00 pm</b>	<b>California North Citys</b>	<b>NORCAL</b>	<b>144.250</b>	<b>KN6NG Tony</b>
TUE	8:00 pm	Greensboro, NC		144.225	K4HC
<b>WED</b>	<b>9:00 pm</b>	<b>Texas, Okla, Ark, Louisiana</b>	<b>North Texas SWOT</b>	<b>144.250</b>	<b>W5FKN Bob</b>
<b>THU</b>	<b>8:00 pm</b>	<b>California South Citys</b>	<b>NORCAL</b>	<b>144.250</b>	<b>KA6CHJ Paul</b>
<b>THU</b>	<b>8:00 pm</b>	<b>Oklahoma, Texas, Ark, Missouri, Kansas</b>	<b>Eastern Oklahoma SWOT</b>	<b>144.250</b>	<b>KM5ES John KD5ZVE Jimmy</b>
THU	9:00 pm	Tennessee	Upper Cumberland	144.225	N2BR Bobby
<b>SAT</b>	<b>7:00 am</b>	<b>Texas, Okla, Ark, Louisiana</b>	<b>Piney Woods SWOT</b>	<b>144.250</b>	<b>KM5PO Jim</b>



**41st Annual**

**CSVHFS Conference**

July 26-29, 2007 • San Antonio, TX • Omni Hotel

## SIDEWINDERS ON TWO ENROLLMENT OR RENEWAL FORM

NOTE: Though your membership and number are good for life you must renew annually to receive the newsletter and stay on the active list..

Enclosed find check/MO. to: **Howard Hallman WD5DJT, Sec.Treas.**  
**3230 Springfield Lancaster, TX**  
**75134-1214**

**New member:**  \$6 - receive bulletin by email  
 \$12 - receive bulletin by US post office

I have worked the following SWOT members:

Call: \_\_\_\_\_ SWOT No. \_\_\_\_\_ Call: \_\_\_\_\_ SWOT No. \_\_\_\_\_

**Renewing:**  \$6 - receive bulletin by email  
 \$12 - receive bulletin by US post office

My SWOT No. is \_\_\_\_\_

Name: \_\_\_\_\_ Call \_\_\_\_\_ Grid Square \_\_\_\_\_

Street address \_\_\_\_\_

City \_\_\_\_\_ State \_\_\_\_\_ Zip Code \_\_\_\_\_

Telephone Nos. \_\_\_\_\_

Optional: I check into the following nets: \_\_\_\_\_

E-mail \_\_\_\_\_

Receive Newsletter By Email: YES \_\_\_\_\_ NO \_\_\_\_\_

Note: Send all forms to the Secretary-Treasurer at top of this form.

### SECRETARY - TREASURER :

Howard Hallman/WD5DJT  
3230 Springfield Ave.  
Lancaster, TX 75134-1214  
Phone: (972)-224-5964  
Email: [wd5djt@swbell.net](mailto:wd5djt@swbell.net)  
Webpage: <http://home.swbell.net/wd5djt>

### VICE-CHAIRMAN & WEBMASTER :

John Petersen/KM5ES  
Email: [km5es@uslogon.net](mailto:km5es@uslogon.net)  
Webpage: [www.km5es.net](http://www.km5es.net)

### CHAIRMAN: Art Jackson/KA5DWI

Email: [ka5dwi@sbcglobal.net](mailto:ka5dwi@sbcglobal.net)  
Phone: (817)-485-4977

### BULLETIN EDITOR:

Jim McMasters/KM5PO  
Email: [km5po@arrl.net](mailto:km5po@arrl.net)  
Phone: (817)-563-2720  
Webpage: <http://207.5.45.45>

### S.W.O.T. GENERAL INFORMATION

Send renewals and new applications for membership to Howard Hallman WD5DJT (See address above). Please make all checks payable to SIDEWINDERS ON TWO. Include your SWOT # for your renewals.

Send your SWOT "Members Worked" from your log to, SWOT Awards manager, Wade Massey, 1016 Weiss Ave, Princeton TX., 75407 \$1.00 fee for certificate and your certificate number would be appreciated, also SASE.

E-Mail all articles and reports to the Editors' email address listed above or you can mail them to Jim McMasters KM5PO, 2805 Shady Lane South, Arlington, Texas 76601.

### MERCHANDISE:

Decals and listings available for \$1.00 each for shipping and handling from the Secretary/Treasurer.

SWOT Patches are available at a price of \$4.00 Each + \$.50 for mailing

Badges are available from "The Sign Man", Rick Pourciau NV5A, [http://](http://www.thesignman.com/menu.html)

[www.thesignman.com/menu.html](http://www.thesignman.com/menu.html)



Side Winders on Two Radio Club S.W.O.T.  
Promoting Weak Signal Operation since 1976

