

Two meter Single Sideband *Any Questions?*

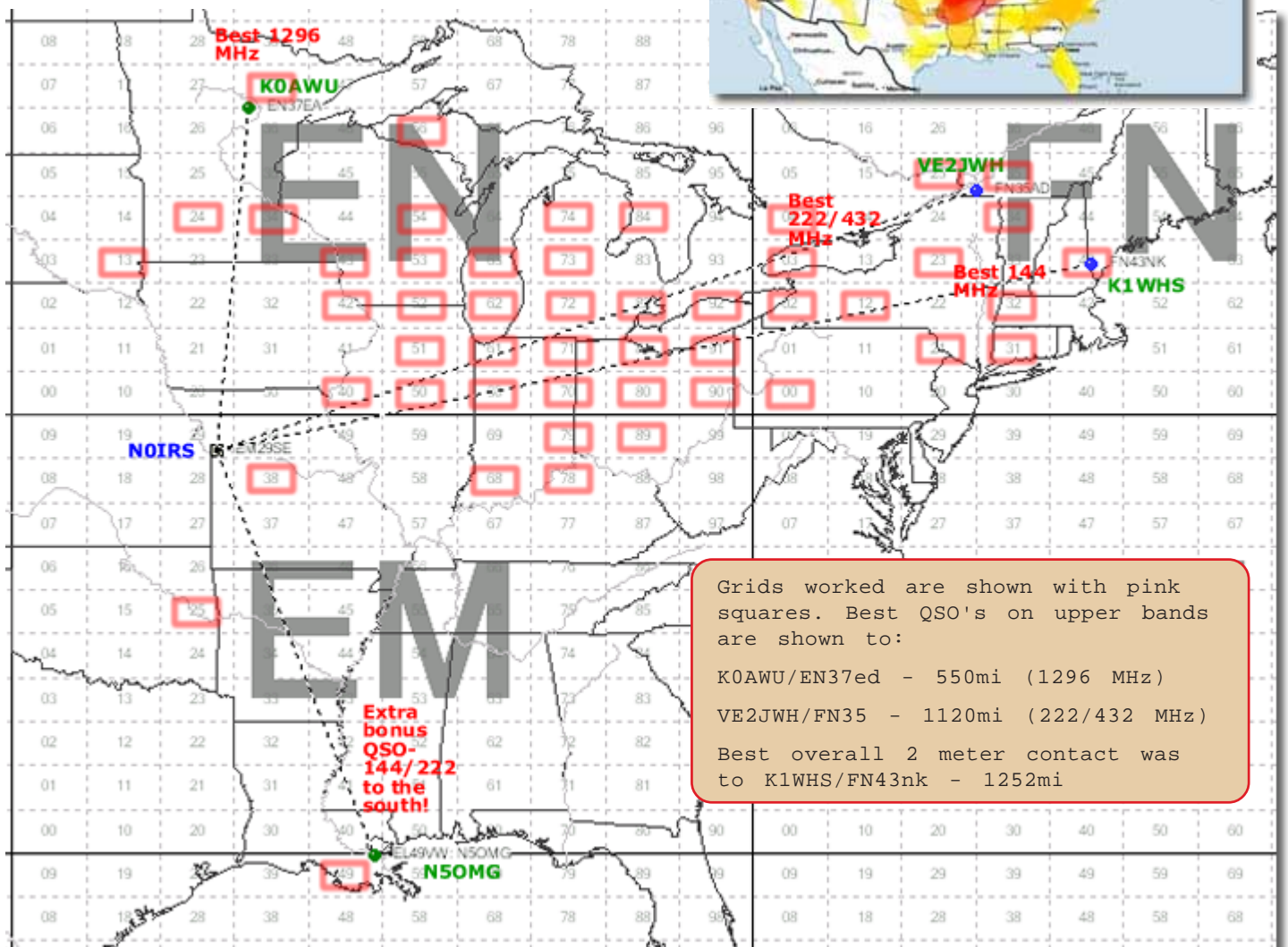
Think two meters is always a bunch of white noise on 144.200? Think all the activity has gone to the FM mode?

Think twice.

Here's the grids-worked map from NOIRS, J.D. of Kansas City VHF Grid Bandits fame (<http://www.kcvhfgridbandits.com>) and what he was able to accomplish in the two day band opening August 24-25th. He made 131 contacts covering numerous states and grids. This is an example of what can be

done when you are ready for an opening and in the right place when it happens.

Impressive job J.D.!!!!!!



Chairman's Corner

The Chairman's Corner

By Jimmy Johnson KD5ZVE



Hello again from the eastern shores of Oklahoma and the beautiful countryside around Claremore we call home. As fall temperatures kick in we are reminded of the nice tropo that comes with it! I hope that a majority of you have been able to enjoy either the social aspects of two meters lately or possibly one of the several nice openings this summer brought to the band. Strong band openings give 2 meter sideband a big shot in the arm such as the one illustrated on page one of this bulletin. Combine a fine tropo event with the generosity and motivation of a great operator like J.D., N0IRS (as well as the

literally dozens and dozens of other stations involved) and you come out with a lot of positive energy for two meters! And finally, this big opening caused some record number of check-ins to our SWOT nets and other nets during that exciting week which is frosting on the cake.

Our club is closing in on a completed Incorporation package which I will have final details on in the near future. There are several other activities under discussion by your Board of Directors and our website, <http://www.swotrc.net> and our Yahoo Group are thriving well. Thank you Tom, N5GE for continuing to develop the site and thank you to the moderators who watch over the Group.

See you on the band
-Jimmy, KD5ZVE

Jim and Lee Ann, K5YC/ KD5IHZ DM82

Meet Jim Crawford, K5YC and his wife, Lee Ann, KD5IHZ who



hail from Lovington, New Mexico. This is halfway between Lubbock and Artesia and not a place where you would think a VHF'er would experience a lot of success. This part of New Mexico, also known as The Enchanted state, is mighty dry

with an average annual rainfall of just 15" and in spite of very few openings, Jim has managed to rack up 33 grids on 2 meters ssb or cw! In one opening early this summer Jim and Lee Ann proved that tropo does indeed reach across the dry line making contacts into:

Texas—EM31, EM00, DM92, DM93, EM03, EM22, EM13

New Mexico—DM73, DM84

Oklahoma.—EM26, EM25, EM04, EM15, EM14



Arkansas.—EM25, EM45, EM26
Kansas—EM27, EM06
Missouri—EM27
Tennessee.—EM55
Colorado—DM67

These stations were worked on ssb and cw using 150 watts on 2

meters and a M2 long boomer with 7/8 inch hardline and a 8 element quad on 432 with 30 watts. Best DX was to Tennessee, N4LI at a dx of 781 miles on both 2 and 432. Jim uses a variety of antennas. On 2 meters, there's a long boomer, a ground plane and a 5 element beam. On 6 meters, there's a 4

element homebrew quad, a half-square, a vertical, and a 3 element yagi. On 432, he uses an 8 element quad.



Good to know there are active VHF/UHFers in virtually every part of the country! Keep an ear out for Jim and Lee Ann !!

North American VHF WSJT 2009 Geminids Test

Click [here](#) for the contest homepage.

Sponsor: WSJT_Group_groups.yahoo.com/group/wsjtgroup/

Contest period: 0000 UTC Dec 12 to 0200 UTC Dec 16, 2009. The test period has been chosen to coincide with the 2009 Geminids meteor shower.

Bands: 50, 144, and 222 MHz.

Entry Classes: Assisted, Random Only, Assisted Rover, or Random-Only Rover. See Rules for details.

Rules:

1) Exchange is both callsigns, four-character maidenhead grid squares, and final 'Rogers'.

2) Calling and random working frequencies for this contest:
a. 6 meters: 50.260 for FSK441/JT6M, 50.294 for terrestrial JT65
b. 2 meters: 144.140 for FSK441/JT6M, 144.148 for terrestrial JT65
c. 1 $\frac{1}{4}$ meters: 222.065 for FSK441/JT6M, 222.085 for terrestrial JT65

3) QSOs may be made using WSJT transmission modes only.

4) QSOs may be made using any natural terrestrial propagation mode. (No EME, repeater, or satellite contacts.) Though it is expected that most contacts will be made via meteor-scatter, the propagation mode does not have to be known or logged.

5) QSOs of any distance can be made and counted. There are no disallowed grid squares.

6) QSOs with the same station on different bands count as separate QSOs.

7) Output power up to the legal limit on any band is allowed.

8) Assisted Class rules:

a. Use of self-spotting and scheduling (e.g., [Ping Jockey website](#)) before and during the event are allowed. An example of self-spotting is a Ping Jockey post 'CQ east on 144.140'.
b. Ping Jockey use gets very heavy during this event, so operators are encouraged to adhere to [proper posting etiquette](#). All operators are reminded that exchanging any information on Ping Jockey or other external communications link during the QSO attempt invalidates the contact.

c. Operators are free to attempt both scheduled (Assisted) and Random QSOs. If a Random QSO is made with a station that has already been worked with a schedule, replace the Assisted score with the appropriate Random score.

Example: WA5UFH works WB2FKO on 50 MHz after scheduling on Ping Jockey. The QSO is scored as 713 miles. Later in the event, these stations work randomly. The QSO is now scored with 713 miles plus 200 bonus miles.

d. Scheduled QSOs should not be made on the calling/random frequencies.

9) Random Only Class rules:

a. A Random-Only operator must refrain from any self-spotting and/or scheduling before and during the contest. Even passively monitoring Ping Jockey activity violates the spirit and intent of Random operation.

b. Any use of Ping Jockey or other means of assistance on ANY QSO disqualifies an operator from entering in the Random Only class. If a Random Only class entry is anticipated, the best policy is to simply NOT have Ping Jockey running.

c. Use of FSK441 Shorthand Messages on the calling/random frequencies is not allowed. All operation on the calling/random frequencies must make use of the "appended message" format. Detailed procedures for random operation can be found [here](#).

10) Rover Class (Assisted and Random Only) rules:

a. The rules for Rovers are the same as for fixed stations.

b. Rovers must remember to change the grid square in their exchange when moving from one grid square to another.

Scoring:

1) The scoring for all classes is the distance in miles between stations as determined by the 6 character grid square calculated by WSJT. If the last two grid square characters are unknown, use <http://www.hamcall.net>.

2) For rover stations worked, use the four-character grid square transmitted in the exchange.

3) Making random and higher-frequency band contacts are rewarded with Bonus Miles. Bonus Miles are figured as follows:

Total score is the sum of miles worked plus Bonus Miles.

Band	Random Contacts	Assisted Contacts
50	200	0
144	400	200
222	600	400

This year during the Geminids meteor shower the WSJT Group is holding a somewhat redesigned contest. Formerly called the North America High-Speed Meteor Scatter contest, this year's contest is open to all contacts made via **any WSJT digital mode**, not just meteor scatter. Though we expect the majority of contacts made will still be via MS, contacts can also be made via any natural terrestrial propagation mode. In addition, we're adding the new wrinkle of DISTANCE SCORING, with bonus miles awarded for higher-frequency and/or random unscheduled contacts. -Bill/W5WVO

Log submission: Participants should submit: 1) a Summary and 2) a Log.

1) The Summary should include:

- a. Your call
- b. Your time zone
- c. Entry Class: Assisted, Random-Only, Assisted Rover, or Random Only Rover
- d. QSOs per band
- e. Final claimed score

Show the arithmetic you use to obtain your final score (Total Miles + Bonus Miles).

2) For each QSO, the Log must show:

- a. Date (UTC)
- b. Time (UTC)
- c. Callsign of station worked
- d. Four-character grid of station worked
- e. Band (50, 144, or 222)
- f. Actual Miles and Bonus Miles.

This information will be used to cross-check with other logs for scoring accuracy.

Submission of the log as an Excel spreadsheet (arrange the columns as shown above) is strongly encouraged, although any convenient log submission format is acceptable.

OpenOfficeCalc is an excellent free program that almost perfectly mimics Excel. It can be downloaded [here](#). Logs should be emailed by January 15, 2010 to Tip WA5UFH (wa5ufh@ykc.com).

Awards:

Certificates will be mailed to the top scoring Assisted, Random-Only, Assisted Rover, and Random-Only Rover operators in each of the four North American time zones.

Contest Coordinators: Tip (WA5UFH); John (N6ENU); Mike (WA2FKO); Bill (W5WVO)

New beacon: N0YK/B DM98mg 144.288 MHz



A new propagation tool and reliable signal on the band is being recorded by many across the midwest US. N0YK/B is the work of Chad Wasinger, an avid 2 meter DX'er and EME'er. Chad can control the beacon remotely and indeed is able to run his entire home QTH station by this method.

Chad has been instrumental in developing a second beacon lately (operational in late August!), the WA00QA beacon located near Logan, New Mexico (DM85gi) operating on 144.284 MHz. For more details see Chad's website: <http://users.wbsnet.org/n0yk/>



The fine antenna farm growing at the N0YK home QTH. Makes you wonder what's going up next on that spare rotor near the chimney?

SWOT Net Reports

Here are the net reports for July & August 2009

Northern California W6OMF (Sunday)

July:

Week 1 - 67 check ins
Week 2 - 56 check ins
Week 3 - 63 check ins
Week 4 - 58 check ins

17 members checked in once
24 checked in twice
17 checked in 3 times
32 checked in all 4 times
11 grids

August:

Week 1 - 76 check ins
Week 2 - 66 check ins
Week 3 - 63 check ins
Week 4 - 72 check ins
Week 5 - 80 check ins

19 checked in once
11 checked in twice
05 checked in 3 times
29 checked in 4 times
37 checked in all 5 times
12 grids

Northeast Missouri NOPB

(Monday 8pm)

Date Check-ins/Grids/
States/SWOT

07/06 29 - 17 - 97 - 04
07/13 32 - 14 - 07 - 05
07/20 29 - 13 - 07 - 05

08/03 28 - 12 - 07 - 04
08/10 34 - 17 - 08 - 08
08/17 35 - 19 - 08 - 06
08/27 45 - 28 - 13 - 06
(included 3 Canada
provinces) What a net!
08/31 40 - 21 - 08 - 06

North Texas W5FKN (KM5PO sub) (Wednesday 9pm)

Date Check-ins/Grids/SWOT/
States

07/01 22 - 14 - 09 - 03
07/08 30 - 17 - 14 - 04
07/15 23 - 12 - 12 - 05
07/22 no net
07/29 16 - 12 - 09 - 02

08/05 26 - 15 - 11 - 03
08/12 19 - 15 - 09 - 04
08/19 19 - 13 - 03 - 03
08/26 30 - 13 - 18 - 03

Southeast Ohio AB8XG

KD8DJE Sub)

(Tuesday 8pm)

Date CheckIns/States/Grids/
SWOT

07/09 11 - 02 - 03 - 05
07/16 06 - 01 - 02 - 05
07/23 14 - 02 - 03 - 06
07/30 12 - 02 - 03 - 05

08/06 15 - 03 - 04 - 06
08/13 16 - 03 - 05 - 06
08/20 13 - 02 - 04 - 05
08/27 14 - 02 - 05 - 04

E. Oklahoma KD5ZVE

(Thursday 8pm)

Date CheckIns/Grids/States/
SWOT

07/02 16 - 09 - 04 - 11
07/09 14 - 10 - 04 - 08
07/16 19 - 10 - 04 - 15
07/23 14 - 07 - 03 - 11
07/30 21 - 10 - 04 - 16

08/06 17 - 09 - 03 - 13
08/13 24 - 13 - 04 - 13
08/20 26 - 12 - 04 - 16
08/27 15 - 08 - 03 - 11

Daytona Beach W2RAC/W1LVL

(Wednesday 8pm)

Date Check-ins

08/05 3 checkins
08/11 3 checkins
08/19 3 checkins
08/26 3 checkins

Northern Illinois K9TMS

(Sunday 7pm)

Date Check-ins

no data

South Texas N5SSH

(Tuesday 9pm)

2009-08-04

Frank N5SSH (NC) (EL07) 3576
Mario KF5RM (EL07) 2480
Van KD5REJ (EL07) (no number yet)

2009-08-11

Frank N5SSH (NC) (EL07) 3576
Mario KF5RM (EL07) 2480
Bill W5GVE (EM10gc) 144
Tom K5VH (Relayed by Bill) (EM00) 2999

2009-08-18

Frank N5SSH (NC) (EL07go) 3576
Mario KF5RM (EL07) 2480
Bill W5GVE (EM10gc) 144
Tom K5VH (EM00) 2999
Jim KM5PO (EM12)

2009-08-25

Frank N5SSH (NC) (EL07go) 3576
Mario KF5RM (EL07) 2480
Bill W5GVE (EM10gc) 144

E. Texas Piney Woods

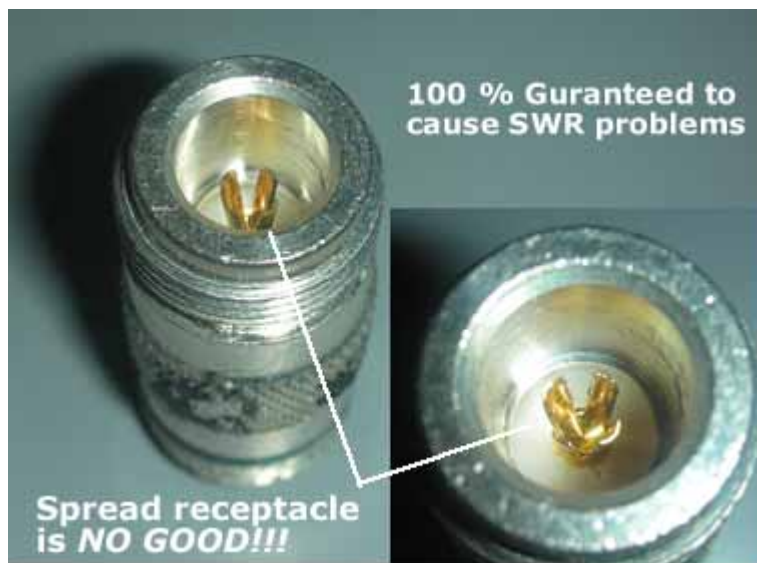
KM5PO (K5LOW sub)

(Saturday 7am)

Date Check-ins/Grids/SWOT/
States

07/04 20 - 12 - 12 - 04
07/11 23 - 14 - 11 - 05
07/18 19 - 10 - 10 - 03
07/25 29 - 16 - 12 - 05

08/01 23 - 13 - 11 - 05
08/08 27 - 15 - 13 - 05
08/15 29 - 16 - 14 - 06
08/22 24 - 10 - 10 - 04



Event and Contest Calendar:

Sep 12-13 ARRL September VHF QSO Party

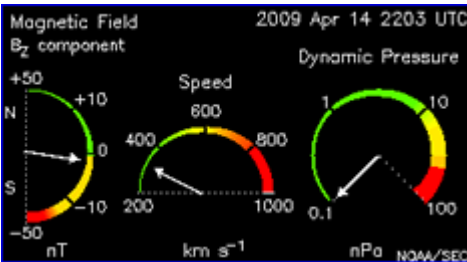
Sep 19-20 ARRL 10 GHz and Up Contest

Sep 21 144 MHz Sprint
 Sep 29 222 MHz Sprint
 Oct 07 432 MHz Sprint
 Oct 17 902 MHz and above Sprint
 Oct 24 50 MHz Sprint
 SVHFS Sprint rules: http://www.svhfs.org/fall_sprint_rules_2009.pdf

Dec 12-16 North American VHF WSJT 2009 Geminids Test sponsored by the WSJT Group - http://www.sportsclique.com/wb2fko/w09/winter_2009.html

What to expect Sep-Dec Meteors:

Pisceans Sept 9-18, peak Sept 10, 6zHR
Sextanids Sept 19 - Oct 8, peak Sept 29, 5zHR
Arietids S Oct 5 - Oct 15, peak Oct 11, 5zHR
Orionids Oct 12 - Oct 9, peak Oct 22, 25 zHR
Leonids Nov 18 zHR periodic in nature!
alpha Monocerotids Nov 21 zHR: low with 10 year cycle. next peak = 2015



Real time Magnetic Field dials (Aurora)

SWOT Bank account balance [08/31/09]

\$3093.35

Howard Hallman, SWOT Secretary/
 Treasurer

11 Canis Minorids Dec 9-11
 1.27 zHR

Geminids Dec 12-15 peak Dec 14 0400UTC, 120 zHR
Ursids Dec 21-23 peak Dec 22 1300UTC, 12 zHR
 Full Meteors calendar:
[W8WN](http://www.w8wn.com)
[Gary Kronk](http://www.garykronk.com)

Aurora:

Watch:
<http://umtof.umd.edu/pm/latest2day.gif>

Tropo:

Always keep an eye on:
 the [Hepburn Forecast](#).
 the [APRS Real time VHF propagation map](#).
 the [Presence of radar reflectivity \(false echos\)](#)
[HERE](#)
 the [Green Page \(144 Mhz Propagation Logger\)](#)
 the [Surface Map](#) (there are many choices)
www.spaceweather.com



Our Equipment List and Bands We Will Be Operating This Year In 2009

Radios	Tower	Antennas	Amplifiers
Yaesu 736R - 2m	30 foot	2m - 12 Element K1FO	2m - TE 1452G
Yaesu 736R - 222	25 Foot	222 - 16 Element K1FO	222 - TE 2252G
ICOM - 910H - 432	Mast	432 - M2 440-20ATV	432 - TE4452G
ICOM 910H - 1296	At 2800ft	1296 - 55 Element Loofer	1296 - DEMI PA60
ICOM 7000 - 50mHz	ASL	6m - Cushcraft A505S	6m - TE 0552G

SWOT#	Call	Name	City	State	Grid
3578	KOHL	Ken	Glen Ullin	ND	DN96
3532	AB8XG	Kenny	Albany	OH	EM89
3531	KD8DJE	Russell	Albany	OH	EM89
3546	WA5LFD	Rich	Garland	TX	EM12
2480	KF5RM	Mario	Laredo	TX	EL07
90	WB2CUT	Richard	Metuchen	NJ	FN20
2691	W8NJR	Terry	Ludlow Falls	OH	EN70
3576	N5SSH	Frank	Laredo	TX	EL07
907	K9TMS	Thomas	Round Lake Beach	IL	EN52
2421	W5DBY	Gerald	Arlington	TX	EM12

From Howard Hallman, SWOT Secretary.
 Membership updates and new members

SWOT and Selected 2-Meter Nets

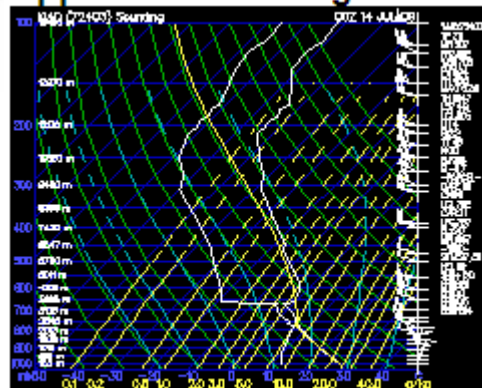
Help improve our listing of nets! If you find errors or omissions or know of other two meter nets being conducted, please send email to either the bulletin editor: km5po@arrl.net or the SWOT Net Manager- Jimmy Johnson, jjohn357@swbell.net

Day	Local Time	Area	Net	Frequency	Net Control Station
SUN	8:00 pm	Vacaville, CA	NORCAL	144.250	W6OMF Larry
SUN	7:30 pm	Costa Mesa, CA	South California	144.240	WB6NOA Gordon
SUN	7:00 pm	Chicago, IL	North Illinois	144.250	K9TMS - Tom
SUN	8:30 am	Tucson, AZ	Arizona	144.250	N7SQN Al
SUN	8:30 pm	Zebulon, NC		144.220	N1GMV
SUN	9:30 pm	Holland, MI	Michagan SWAM	144.155	K8NFT
MON	7:30 pm	Albuquerque, NM	New Mexico	144.200	N5XZM Bobby
MON	8:00 pm	Colorado	Rocky Mt. VHF +	144.220	N0VSB W6OAL
MON	8:00 pm	Midwestern United States	Northeast Missouri SWOT	144.250	N0PB Phil
MON	9:00 pm	Tidewater, VA		144.230	
TUE	8:00 pm	Bay Area, North California, West Nevada	Northern California SWOT	144.250	KG6WLV John
WED	8:00 pm	Florida	Daytona Beach SWOT	144.250	W2RAC Richard W1LVL George
WED	9:00 pm	Texas, Okla, Ark, Louisiana	North Texas SWOT	144.250	W5FKN Bob
THU	8:00 pm	Bay Area, North California, West Nevada	Northern California SWOT	144.250	W6DWI Robin
THU	8:00 pm	Oklahoma, Texas, Ark, Missouri, Kansas	Eastern Oklahoma SWOT	144.250	KD5ZVE Jimmy
THU	8:00 pm	Greater Ohio area	Southeast Ohio SWOT	144.250	AB8XG Kenny KD8DJE Russell
SAT	7:00 am	Texas, Okla, Ark, Louisiana	Piney Woods SWOT	144.250	KM5PO Jim



Accurately detect tropo by observing "false" echoes on National Weather Service maps such as this one which you can link to at http://radar.weather.gov/Conus/RadarImg/latest_Small.gif
Watch for light blue and gray areas turning darker.

Upper Air Sounding Plots



Current SkewT from Washington DC

A new propagation tool has been added to the SWOT website: <http://www.swotrc.net>

SIDEWINDERS ON TWO ENROLLMENT OR RENEWAL FORM

NOTE: Though your membership and number are good for life you must renew annually to receive the newsletter and stay on the active list..

Enclosed find check/MO. to: **Howard Hallman WD5DJT, Sec.Treas.**

NOTE: do not make checks out to SWOT. Make checks out to Howard Hallman

**3230 Springfield Lancaster, TX
75134-1214**

New member: \$6 - receive bulletin by email
 \$12 - receive bulletin by US post office

I have worked the following SWOT members:

Call: _____ SWOT No. _____ Call: _____ SWOT No. _____

Renewing: \$6 - receive bulletin by email
 \$12 - receive bulletin by US post office

My SWOT No. is _____

Name: _____ Call _____ Grid Square _____

Street address _____

City _____ State _____ Zip Code _____

Telephone Nos. _____

Optional: I check into the following nets: _____

E-mail _____

Receive Newsletter By Email: YES _____ NO _____

Note: Send all forms to the Secretary-Treasurer at top of this form.

SECRETARY - TREASURER :

Howard Hallman/WD5DJT
3230 Springfield Ave.
Lancaster, TX 75134-1214
Phone: (972)-224-5964
Email: wd5dj@swbell.net
Webpage: <http://home.swbell.net/wd5dj>

CHAIRMAN & SWOT NET MANAGER :

Jimmy Johnson/KD5ZVE
Email: jjohn357@swbell.net

BULLETIN EDITOR :

Jim McMasters/KM5PO
Email: km5po@arrl.net
Phone: (817)-563-2720
Webpage: <http://www.km5po.net>

SWOT WEBMASTER (www.swotrc.net)

Tom Childers/N5GE
Email: n5ge@n5ge.com

S.W.O.T. GENERAL INFORMATION

Send renewals and new applications for membership to Howard Hallman WD5DJT (See address above). Please make all checks payable to Howard Hallman Include your SWOT # for your renewals.

Send your SWOT "Members Worked" from your log to, SWOT Awards manager, Wade Massey, 1016 Weiss Ave, Princeton TX., 75407 \$1.00 fee for certificate and your certificate number would be appreciated, also SASE.

MERCHANDISE :

Decals and listings available for \$1.00 each for shipping and handling from the Secretary/Treasurer.

SWOT Patches are available at a price of \$4.00 Each + \$.50 for mailing

Badges are available from "The Sign Man", Rick Pourciau NV5A, [http://](http://www.thesignman.com/menu.html)

www.thesignman.com/menu.html



Side Winders on Two Radio Club S.W.O.T.
Promoting Weak Signal Operation since 1976

